

**MODEL- KM 8002**

**FEATURES**

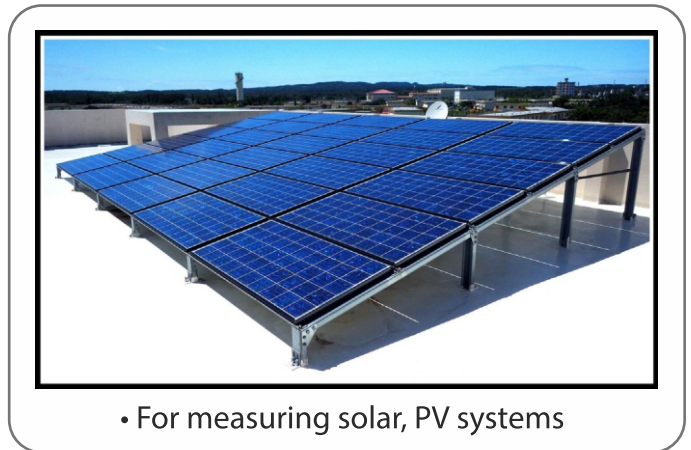
- **DC Voltage** 1500V / AC 750V for solar power system & power equipment management.
- **6000 count LCD**
- **AC / DC auto scanning**
- **AC / DC  $\mu$ A** : 600.0 $\mu$ A ~ 6000 $\mu$ A
- **AC / DC mA** : 60.00mA ~ 600.0mA
- **Resistance** : 600.0 $\Omega$  ~ 60.00M $\Omega$
- **Capacitance** : 6.000nF ~ 60.00mF
- **Frequency** : 6.000kHz ~ 100.0kHz
- **Diode Continuity function**
- **VA Hz function for voltage & Current**
- **Range change function**
- **Data Hold**
- **Low battery indication**
- **Auto power off**
- **Operating temperature** : 0 ~ 40°C
- **Relative Humidity** : 80% max.



Preliminary Data

**GENERAL SPECIFICATIONS :**

- **Dimension** : Approx. 221(L) X 110(W) X 57(D) mm
- **Weight** : Approx. 513g.(Battery included)
- **Power Supply** : 1.5V (AA) X 2 Alkaline battery.
- **Accessories** : User Manual, Test Leads, Alligator Clips, Hand Strap & Batteries.
- **Safety Standard** : IEC/EN61010-1, CAT III 1000V  
IEC/EN61010-1, CAT IV 600V  
EN61326-1



• For measuring solar, PV systems



Hand strap

All Specifications are subject to change without prior notice

## ELECTRICAL SPECIFICATIONS : KM 8002

### DC Voltage

Ranges	Resolution	Accuracy
600mV	1mV	±(0.5%rdg+5dgt)
6V	1mV	
60V	10mV	
600V	100mV	
1000V for CE	1V	
1500V for general	1V	

- Input impedance : 10MΩ

### AC Voltage

Ranges	Resolution	Accuracy
600mV	0.1mV	±(1.0%rdg+5dgt)
6V	1mV	
60V	10mV	
600V	100mV	
750V	1V	

- Input impedance : 10MΩ

### DC mA / μA

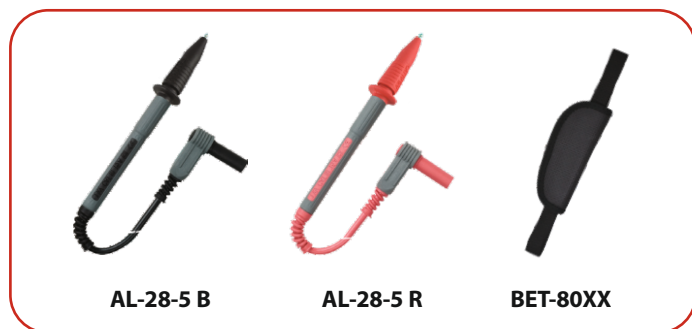
Ranges	Resolution	Accuracy
600μA	0.1μA	±(1.2%rdg+5dgt)
6000μA	1μA	
60mA	0.01mA	
600mA	0.1mA	

- Overload protection 0.6A/1000V fast blow fuse for 600mA.

### AC mA / μA

Ranges	Resolution	Accuracy
600μA	0.1μA	±(1.5%rdg+3dgt)
6000μA	1μA	
60mA	0.01mA	
600mA	0.1mA	

- Overload protection 0.6A/1000V fast blow fuse for 600mA.



### Resistance

Ranges	Resolution	Accuracy
600Ω	0.1Ω	±(1.2%rdg+3dgt)
6kΩ	1Ω	
60kΩ	10Ω	
600kΩ	100Ω	
6MΩ	1kΩ	
60MΩ	10kΩ	±(2.3%rdg+4dgt)

### Capacitance

Ranges	Resolution	Accuracy
6nF	1pF	±(3%rdg+10dgt)
60nF	10pF	
600nF	100pF	
6μF	1nF	
60μF	10nF	
600μF	100nF	
6mF	1μF	
60mF	10μF	

### Frequency

Ranges	Resolution	Accuracy
6kHz	1Hz	±(0.5%rdg+2dgt)
60kHz	10Hz	
100kHz	100Hz	

### Continuity

Range	Audible threshold
600Ω	Less than 30 Ω

### Diode

Range	Accuracy
2V	±(1.5%rdg+3dgt)

All Specifications are subject to change without prior notice